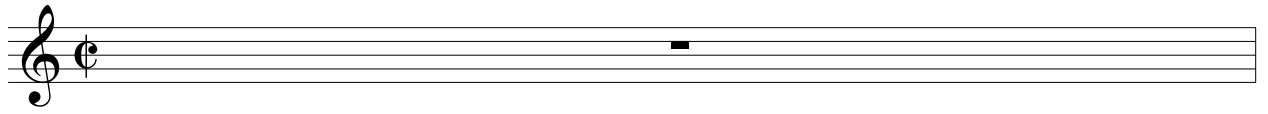


I GOT Rhythm workshop

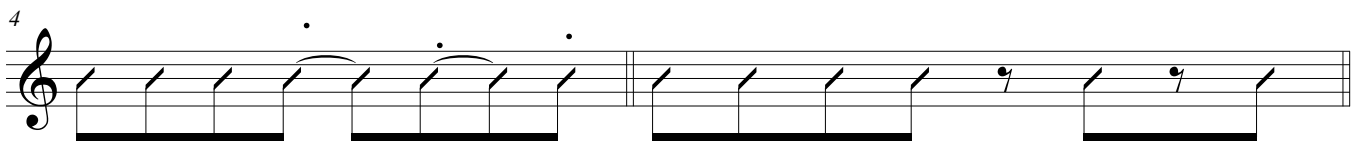


play as Swing eighth notes

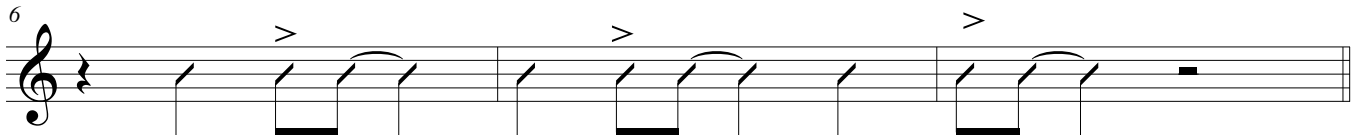


SYNCOPIATION using eighth notes

also written as



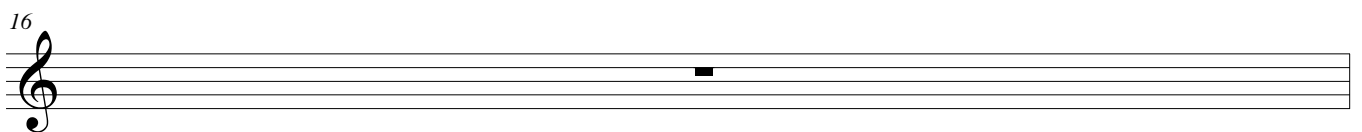
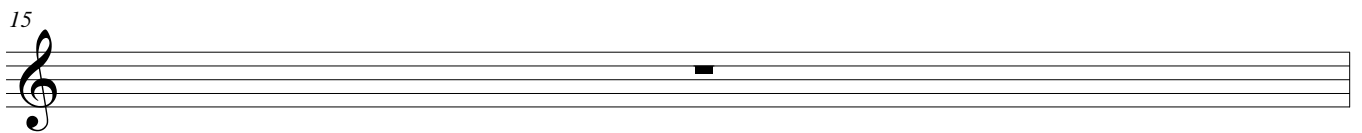
"Salt Peanuts"



BENNY GOODMAN
1938



BGOODMAN
1938



more over the page

BENNY GOODMAN
1938

17

Musical staff for measure 17, featuring a treble clef, a 7/8 time signature, and a series of eighth notes with stems pointing up. A dynamic accent (>) is placed above the first eighth note. The staff is divided into three measures by vertical bar lines.

Lionel Hampton 1938

20

Musical staff for measure 20, featuring a treble clef, a 7/8 time signature, and a series of eighth notes with stems pointing up. The notes are grouped into pairs and then triplets. The staff is divided into three measures by vertical bar lines.

L Hampton 1938

23

Musical staff for measure 23, featuring a treble clef, a 7/8 time signature, and a series of eighth notes with stems pointing up. The notes are grouped into pairs and then triplets. A diamond-shaped articulation mark is placed above the first note of the first pair. The staff is divided into three measures by vertical bar lines.

COUNT BASIE
1960

26

Musical staff for measure 26, featuring a treble clef, a 7/8 time signature, and a series of eighth notes with stems pointing up. The notes are grouped into pairs and then triplets. Dynamic accents (>) are placed above the first notes of the first two pairs. A diamond-shaped articulation mark is placed above the last note of the triplet. A '3' is written below the triplet. The staff is divided into three measures by vertical bar lines.